

ACCEPTED WASTE STREAMS



PO Box 10 Moorebank NSW 1875 T: 02 8761 0000 recycling@benedict.com.au

www.benedictrecycling.com.au

Waste Accepted	Product Code	Belrose	Chipping Norton	Girraween	Newcastle	Wollongong
Mixed Building & Demolition Waste	DEMO	✓	✓	✓	✓	✓
General Solid Waste Recyclable Building & Demolition Waste from Infrastructure Projects May contain man-made rubbish such as plastic, paper, cloth, metal, brick, concrete, asphalt. Tipping subject to test reports being supplied and approved.	GSREC	✓	✓	✓	✓	✓
Rubble - Soil / Clay Based Building & Demolition Waste consisting of a mixture of soil / clay, brick, concrete, asphalt. Must not contain any other material incl. light rubbish.	RUBBL	✓	✓	✓	✓	✓
Rubble - Sand Based Building & Demolition Waste consisting of a mixture of sand, brick, concrete, asphalt Must not contain any other material incl. light rubbish.	RUBBLS	✓	✓	✓	✓	✓
Clean Segregated Concrete Clean Straight Concrete - Building & Demolition Waste - must not contain any other material. Less than 700mm x 700mm in size.	CONCC	✓	✓	✓	✓	✓
Clean Segregated Concrete - Large Clean Straight Concrete - Building & Demolition Waste - must not contain any other material. Greater than 700mm x 700mm in size.	CONCCL	✓	✓	✓	✓	✓
Mixed Brick & Concrete Building & Demolition Waste - must not contain any other material.	CONBK	✓	✓	✓	✓	✓
Clean Segregated Brick Clean Straight Brick - must not contain any other material.	BRICC	✓	✓	✓	✓	✓
Asphalt Building & Demolition Waste - must not contain any other material.	ASPHA	✓	✓	✓	✓	✓
VENM (Certified) Certified only - Virgin Excavated Natural Material Soil, clay, shale, sandstone, sand - must not contain any other material.	VENM	✓	✓	✓	✓	✓
VENM (Certified) - Sand Only Certified only - Virgin Excavated Natural Material. SAND ONLY - must not contain any other material including shale, clay or soil.	VENMS	✓	✓	✓	✓	✓
ENM Excavated Natural Material - Must contain 98% (by weight) natural occurring materials. Tipping subject to test reports being supplied and approved.	ENM	x	x	✓	✓	✓
ENM - Sand only Excavated Natural Material. SAND ONLY - Must contain 98% (by weight) natural occurring materials. Tipping subject to test reports being supplied and approved.	ENMS	x	x	x	✓	x
Timber Must not contain any other material including treated or engineered timber or stumps.	TIMBE	x	✓	✓	✓	✓
Vegetation Full Loads – Garden/Green Waste Only – No Stumps.	VEGET	x	x	✓	✓	✓
Gyprock Clean Gyprock - must not contain any other material.	GYPROCK	✓	✓	✓	✓	✓

Waste Accepted	Product Code	Belrose	Chipping Norton	Girraween	Newcastle	Wollongong
Car Tyres	TYREC	Call us to find your nearest available site.				
Truck Tyres	TYRET					
Stumps (exceeding 500mm diameter)	STUMP					
Mattresses	MATTR					

IMPORTANT! WE DO NOT ACCEPT: ASBESTOS, LIQUID WASTE, RADIOACTIVE WASTE, FOOD WASTE, FLAMMABLE MATERIAL, MEDICAL WASTE, HAZARDOUS MATERIALS, GAS BOTTLES, BATTERIES

ACCEPTED WASTE STREAMS

BENEDICT
BENEDICT
RECYCLING



CLEAN SEGREGATED CONCRETE CONCC

Contains no other waste streams (including fines) but may contain a small amount of reinforcing steel or steel mesh. The concrete pieces should be no larger than 700mm x 700mm. If the concrete pieces exceed this size, then they are classified as CONCCL – concrete large.



CLEAN SEGREGATED CONCRETE BRICC

Brick classified loads can contain clay, terracotta or concrete brick and roof tiles with minimal fines. Brick classified loads should not contain soil, clay, timber, paper, plastic, vegetation or other manmade refuse.



MIXED BRICK & CONCRETE CONBK

The classification will contain mostly concrete and brick however can also contain some tile, asphalt and other hard durable materials (less than 700mm in size). CONBK can contain some fines however, it should not contain soil, clay, timber, paper, plastic, vegetation or other manmade refuse in the loads.



ASPHALT ASPHA

This usually comes to us in the form of reclaimed roads, pavements or parking lot surfaces. In some cases Asphalt may contain a small amount of concrete however, it should not contain other manmade materials.



VIRGIN EXCAVATED NATURAL MATERIAL VENMS SAND

This waste stream is basically clean sand that contains no manmade contaminants. It may contain a very, very small amount of sandstone rock.



VIRGIN EXCAVATED NATURAL MATERIAL VENM

VENM can be classified as soil, shale, sandstone or rock. VENM material must not contain any manmade materials whatsoever.



TIMBER TIMBE

This waste product can be made of any type of timber that has not been laminated or treated with chemical (such as koppers logs). Untreated timber from infrastructure (ie. flooring, pallets) is acceptable as timber waste but cannot contain stumps.



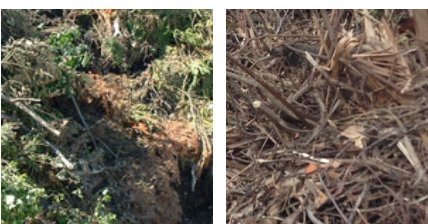
RUBBLE SAND BASED RUBBLS

Building & Demolition Waste consisting of a mixture of sand, brick, concrete, asphalt. Must not contain any other material including light rubbish



RUBBLE RUBBL

Loads that mostly contain brick, tile, concrete, asphalt and natural rock. This stream will have some fines either natural or recycled, but must not contain non-recyclable waste such as timber, plastic, paper, vegetation or other manmade refuse in the loads.



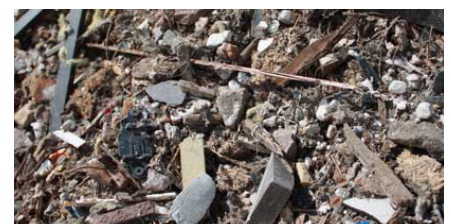
VEGETATION - GREEN WASTE VEGE

This should be garden green waste only and this waste should not contain any manmade material or tree stumps.



MIXED LIGHT DEMOLITION WASTE

This waste has a lighter density and is quite aerated. In many cases there will be no soil and few recoverables. The waste will consist of manmade products such as plastics, timber, glass, metal, cloth, etc. Much of this waste will go to landfill.



MIXED HEAVY DEMOLITION WASTE

This waste stream usually has a heavy density to the product. This product will not be aerated and recoverables when screened can be soils, aggregates for crushing, steel and timber.